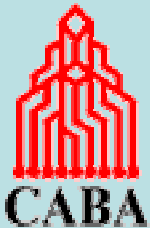


XML in the Real World

Outsourcing Real-Time Facility Management

**XML Symposium
Orlando, FL
February 9, 2005**

Tim Huneycutt, VP Engineering
Gridlogix, Inc.
www.gridlogix.com



Project Description

- A national retailer asked their existing IT service provider to take over the management of the retailer's 4000 facility automation systems.
- The owner expected the outsourced solution to include a high level of integration with other enterprise systems.
- Direct integration using the automation system protocol was not a viable solution.
- The service provider opted to add a real-time XML Web Service interface to the building automation system network.

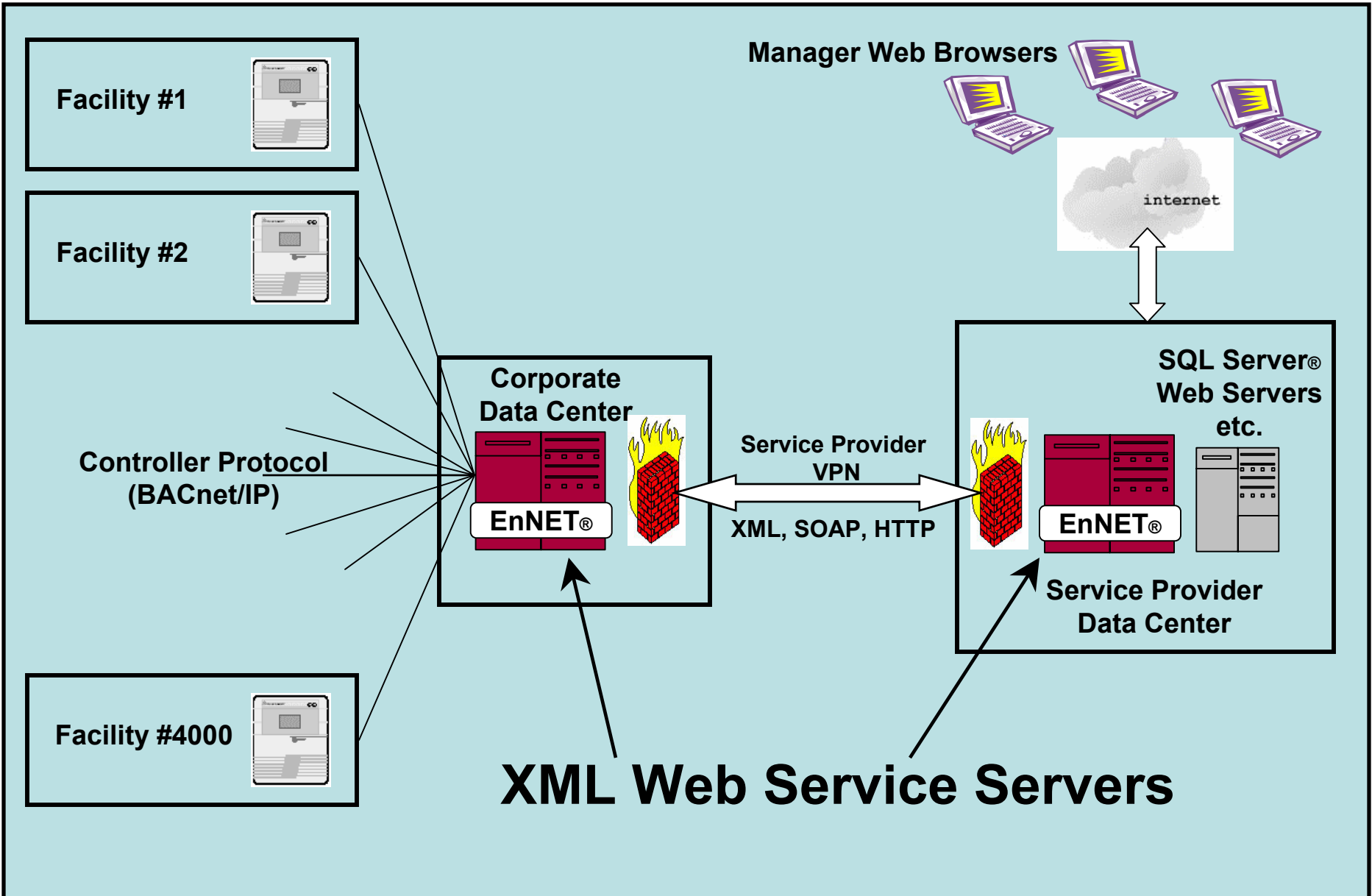
Project Requirements

- Centralize command and control of facilities
- Connect 4000 sites to external data center
- No new hardware or software at local sites
- Outsource system management to the service provider
- Deliver web browser interface to local managers
- Provide “Always On” user access

Existing Systems

- BAS controller at each facility
- System Data Points: 2 Million (approximate)
- Hub and Spoke Enterprise WAN
- Dedicated VPN to Service Provider Data Center
- Service Provider Systems: Linux and Windows®

The Solution is XML Web Services



System Explorer Console

Any and all enterprise applications can tap this new source of information for the benefit of the enterprise and its supply chain partners.

The Service Provider is developing customer specific real-time applications using their preferred development environment.

Project Results/Benefits

- No new hardware or software required at local facilities
- All BACnet traffic restricted to internal WAN
- All Service Provider interaction via SOAP, XML and HTTP (Port 80)
- The scalable solution will support many automation protocols - not just BACnet.
- Remote capabilities include real-time control, real-time monitoring, data trending and alarm notification
- Provides enterprise-level management of assets, energy use, predictive maintenance, quality control, etc.

Presenter Information

**Gridlogix, Inc.
9056 Watson Rd.
St. Louis, MO 63126
Toll Free Telephone: +1.866.903.6638**

www.gridlogix.com

© 2005 Gridlogix, Inc.

EnNET is a registered trademark of Gridlogix, Inc.

All other company and product names are trademarks of their respective companies.